



Addresses Public Health Priorities

Achieving Commendation Series

Acknowledgement

ACCME for Accreditation Tips, Examples of Compliance and Noncompliance, and Quiz Questions

Menu of Criteria for Accreditation with Commendation

Demonstrate compliance with 8 of the 16 Commendation Criteria

Including at least 1 from the Achieves Outcomes Category



Addresses Public Health Priorities



Advances Data
Use



Addresses
Population
Health



Collaborates
Effectively

Evidence Submission

Size is determined by the number of activities offered within the accreditation term

Criterion	Small	Medium	Large	X-Large
	<39	40-100	101-250	>250
Advances Data Use	2 Activities	4 Activities	6 Activities	8 Activities
Addresses Population Health*	2 Activities	4 Activities	6 Activities	8 Activities
	*And attest to meeting this criterion in at least 10% of activities (but no less than two) during accreditation term.			
Collaborates Effectively	Demonstrate the presence of collaborations that are aimed at improving population health with 4 examples from the accreditation term.			



Advances Data Use

Use data to teach about health informatics and improving the quality and safety of care.

Advances Data Use



Submission:

S=2; M=4; L=6; XL=8

CRITICAL ELEMENTS

- Teaches about collection, analysis, or synthesis of health/practice data.

AND

- Uses health/practice data to teach about healthcare improvement



Advances Data Use

Data Use Includes:

- Collection
- Analysis
- Synthesis



Data Can Come From (but is not limited to):

- Electronic Health Records
- Public Health Records
- Prescribing Datasets
- Registries



Advances Data Use

CRITICAL ELEMENTS

- Teaches about collection, analysis, or synthesis of health/practice data.

AND

- Uses health/practice data to teach about healthcare improvement

EXAMPLE 1: NONCOMPLIANT

The provider presented examples describing the use of health and practice data to teach about healthcare improvements.

Activities need to also teach learners how to collect, analyze and/or synthesize data.



Advances Data Use

CRITICAL ELEMENTS

- Teaches about collection, analysis, or synthesis of health/practice data.

AND

- Uses health/practice data to teach about healthcare improvement

EXAMPLE 2:

COMPLIANT

The provider used healthcare data from quality improvement programs to identify common performance gaps in radiation oncology practices. Learners were shown how to use their own data to identify their own performance gaps and develop actionable steps to support quality improvement in their own practice.

The provider taught learners how to use data to identify performance gaps.



Advances Data Use

Common Noncompliance

- Examples do not show that even part of the activity includes teaching about collection, analysis, or synthesis of healthcare/practice data.

CRITICAL ELEMENTS

- Teaches about collection, analysis, or synthesis of health/practice data.

AND

- Uses health/practice data to teach about healthcare improvement



Advances Data Use

ACCREDITATION TIP

- Go beyond including healthcare/practice data in presentations to show learners how to *use* data.





Advances Data Use

Which of the following objectives would help meet the expectations of the Advances Data Use criterion? (You may select more than one)

Answer in Poll

Apply new approaches to the treatment of hepatitis B.

Assess the population of students in my school health program most at risk for hepatitis B.

Develop a questionnaire for college students to screen for potential hepatitis B.



Advances Data Use

Which of the following objectives would help meet the expectations of the Advances Data Use criterion? (You may select more than one)

Answer in Poll

 Apply new approaches to the treatment of hepatitis B.

 Assess the population of students in my school health program most at risk for hepatitis B.

 Develop a questionnaire for college students to screen for potential hepatitis B.



Advances Data Use

**What are you
currently doing,
or could you do
to meet this
criterion?**



Addresses Population Health

Expand your CME program beyond clinical care education to address factors affecting the health of populations.

Addresses Population Health



Submission:

S=2; M=4; L=6; XL=8

Attest to meeting this criterion in at least 10% of activities (but no less than 2)

CRITICAL ELEMENT

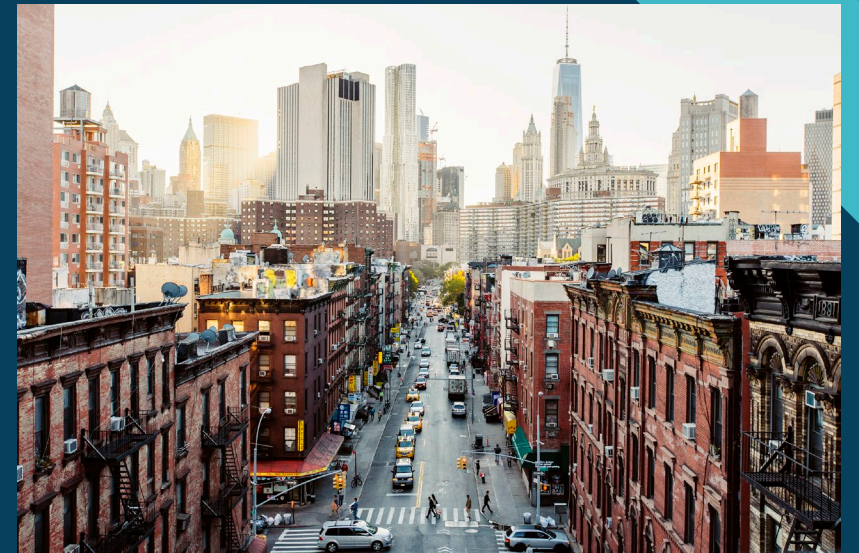
- Teaches strategies that learners can use to achieve improvements in population health.



Addresses Population Health

Factors Affecting the Health of Populations Include:

- Health behaviors
- Economic, social, and environmental conditions
- Healthcare and payer systems
- Access to care
- Health disparities
- Population's physical environment





Addresses Population Health

ACCREDITATION TIPS

- Any activity in your program can address population health.
- Devote a part of the activity towards social, environmental, economic, or political structures that are the framework for the health issue.
- Make sure that the education uses strategies learners can use to recognize and address population health beyond clinical/medical care.





Addresses Population Health

CRITICAL ELEMENTS

- Teaches strategies that learners can use to achieve improvements in population health.

Participants were given time to focus on solutions to enhancing health in the impoverished communities

EXAMPLE 1:

COMPLIANT

An activity included a presentation on the Social Determinants of Health through a collaboration with criminal justice experts and underserved communities. During the activity, participants discussed the social issues surrounding impoverished communities without basic services and identifying leverage points that would impact change. With leaders in the field facilitating discussion, participants also brainstormed ways to address change and enhance health and well-being within these communities.



Addresses Population Health

EXAMPLE 2:

During its annual meeting, the Heart Society offered an activity focused on social determinants of health including racism, food insecurity, and economic status. Learners were taught to identify and address implicit bias and microaggressions, and harness empathetic communication strategies in an effort to bridge the gap between underserved communities and our healthcare system.



Addresses Population Health

EXAMPLE 2:

COMPLIANT

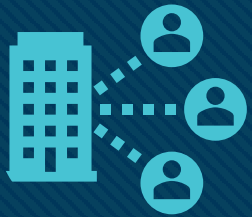
During its annual meeting, the Heart Society offered an activity focused on social determinants of health including racism, food insecurity, and economic status. Learners were taught to identify and address implicit bias and microaggressions, and harness empathetic communication strategies in an effort to bridge the gap between underserved communities and our healthcare system.

This activity taught strategies learners can use to achieve improvements in population health.



Addresses Population
Health

**What are you
currently doing,
or could you do
to meet this
criterion?**



Collaborates Effectively

Build collaborations with other organizations that enhance the effectiveness of the CME program in addressing community/population health issues.

Collaborates Effectively



Submission:

Demonstrate the presence of collaborations that are aimed at improving population health with 4 examples from the accreditation term.

CRITICAL ELEMENTS

- Creates or continues collaborations with one or more healthcare or community organization(s).

AND

- Demonstrates that the collaborations augment the provider's ability to address population health issues.



Collaborates Effectively

ACCREDITATION TIPS

- Requires more than sharing responsibility with another organization.
- Examples must demonstrate how collaboration augments what the CE provider could achieve alone in addressing population health.





Collaborates Effectively

CRITICAL ELEMENTS

- Creates or continues collaborations with one or more healthcare or community organization(s).
- AND
- Demonstrates that the collaborations augment the provider's ability to address population health issues.

EXAMPLE 1: NONCOMPLIANT

The provider describes collaborating with a national medical organization's alumni association, its local chapter, and others to provide CME.

It is not clear which population health issue(s) were being addressed. Collaborations should improve the provider's ability to address population health issues.



Collaborates Effectively

EXAMPLE 2:

COMPLIANT

CRITICAL ELEMENTS

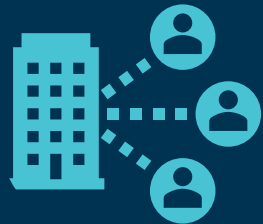
- Creates or continues collaborations with one or more healthcare or community organization(s).
- AND
- Demonstrates that the collaborations augment the provider's ability to address population health issues.

The provider collaborated with a regional clinic and a large physician group to address the opioid epidemic through a CME activity where real cases and small group discussions allowed physicians and non-physicians to discuss difficult situations in their own practice while gaining insight from colleagues. Physician learners reported that they would update or consistently use pain management contracts and more cautiously prescribe opioids following the activity.

Collaborates Effectively

Common Noncompliance

- Not ensuring examples provided demonstrate how collaboration specifically addresses population health in CME activities.



CRITICAL ELEMENTS

- Creates or continues collaborations with one or more healthcare or community organization(s).

AND

- Demonstrates that the collaborations augment the provider's ability to address population health issues.



Collaborates Effectively

Which of the following responses best clarifies how a collaboration would augment a provider's ability to address population health issues?

Answer in Poll

As a result of this collaboration, we were able to use a facility that we would not normally have access to, and therefore were able to teach 50% more learners.

As a result of this collaboration, we were able to provide nursing credit.

As a result of this collaboration, we were able to include learners' professional organizations' national and local chapters.





As a result of this collaboration, we were able to develop content that addressed the root cause of substance use and abuse in the urban versus rural environment, and were better able to target strategies for learners.



Collaborates Effectively

Which of the following responses best clarifies how a collaboration would augment a provider's ability to address population health issues?

Answer in Poll

-  As a result of this collaboration, we were able to use a facility that we would not normally have access to, and therefore were able to teach 50% more learners.
-  As a result of this collaboration, we were able to provide nursing credit.
-  As a result of this collaboration, we were able to include learners' professional organizations' national and local chapters.
-  As a result of this collaboration, we were able to develop content that addressed the root cause of substance use and abuse in the urban versus rural environment, and were better able to target strategies for learners.



Collaborates Effectively

**What are you
currently doing,
or could you do
to meet this
criterion?**

For More Information

Visit the ACCME Website:

[Achieve Commendation](#)

[Compliance Library](#)

Next Session:

Enhances Skills

June 13, 2024

9:00-10:00 am

Via Zoom

Thank You

If you have further questions or want to discuss how your activities might meet these criteria, contact me at ecicarelli@mainemed.com



**Thank you for
participating!**

**CCMEA Accredited
Providers Meeting**